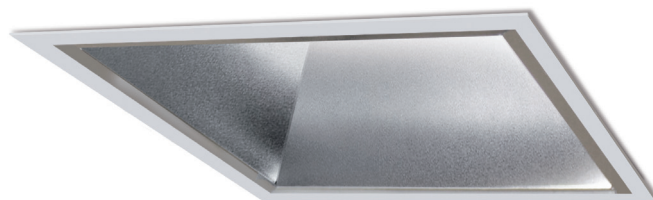



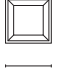
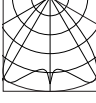


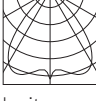

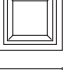

LED Downlight eckig

- › Leuchtengehäuse aus Aluminium und Stahl
- › sichtbare Bauteile nach RAL pulverbeschichtet
- › Aluminiumreflektor, silber, stückeloxiert
- › passives Kühlsystem
- › LED SMD-Array, L90/B10 – 50000 h



- › Small Flux LED-Typ 81 15 W
- › Mid Flux LED-Typ 82 20 W
- › High Flux LED-Typ 83 27 W
- › Ultra Flux LED-Typ 84 39 W

Lichtstrom High Efficiency (CRI > 82)

| | | | Artikel | LED-Typ | 2700 K | 3000 K | 3500 K | 4000 K | Leistung | | |
|--------|---|---|--|----------|--------|---------|---|---------|----------|---------|------|
| ET 130 |  DA 150x150 |  AD 165x165 |  breit | Trimless | 10130. | 81 | 1460 lm | 1570 lm | 1600 lm | 1630 lm | 15 W |
| | | | | | | 82 | 2040 lm | 2200 lm | 2230 lm | 2270 lm | 20 W |
| | | | | | | 83 | 2600 lm | 2800 lm | 2840 lm | 2890 lm | 25 W |
| | | | | | | 84 | 3480 lm | 3740 lm | 3800 lm | 3880 lm | 34 W |
| ET 150 |  DA 178x178 |  AD 190x190 |  breit | | 10140. | 81 | 1470 lm | 1580 lm | 1610 lm | 1640 lm | 15 W |
| | | | | | 82 | 2050 lm | 2210 lm | 2240 lm | 2290 lm | 20 W | |
| | | | | | 83 | 2620 lm | 2810 lm | 2860 lm | 2910 lm | 25 W | |
| | | | | | 84 | 3510 lm | 3770 lm | 3830 lm | 3900 lm | 34 W | |
| ET 150 |  DA 208x208 |  AD 220x220 |  breit | | 10150. | 81 | 1520 lm | 1640 lm | 1660 lm | 1700 lm | 15 W |
| | | | | | 82 | 2120 lm | 2290 lm | 2320 lm | 2370 lm | 20 W | |
| | | | | | 83 | 2710 lm | 2910 lm | 2950 lm | 3010 lm | 25 W | |
| | | | | | 84 | 3630 lm | 3900 lm | 3960 lm | 4040 lm | 34 W | |
| | | | | | 09950. | 165. | Einputzrahmen DA 170 x 170 für Leuchte 10130 trimless | | | | |