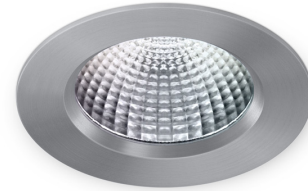


LED Einbaustrahler

- › Leuchtengehäuse aus Aluminium und Stahl
- › Oberfläche pulverbeschichtet
- › Aluminiumreflektor silber, stückeloxiert
- › ausgestattet mit entspiegeltem Schutzglas
- › passives Kühlsystem
- › LED COB-Array, L90/B10 - 50000 h



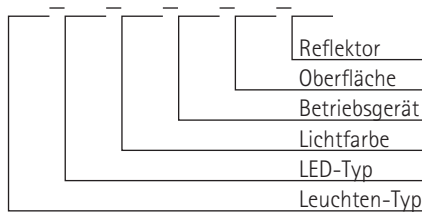
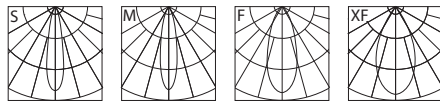
- › Small Flux LED-Typ 11, 21 12 W
- › Mid Flux LED-Typ 12, 22 17 W

Lichtstrom High Performance (CRI > 90)

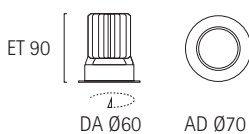
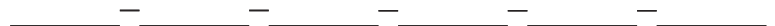
		2700 K	3000 K	3500 K	4000 K
LED-Typ	21	1030 lm	1090 lm	1080 lm	1100 lm
LED-Typ	22	1430 lm	1500 lm	1490 lm	1520 lm

Lichtstrom High Efficiency (CRI > 82)

		2700 K	3000 K	3500 K	4000 K
LED-Typ	11	1210 lm	1280 lm	1310 lm	1320 lm
LED-Typ	12	1670 lm	1780 lm	1810 lm	1820 lm



Artikelnummer-Schlüssel



	LED-Typ	Lichtfarbe	Betriebsgerät	Oberfläche	Reflektor
13000.	11	27 = 2700 K	02 = EVG	20 = nach RAL	S = 19°
	12	30 = 3000 K	03 = 1-10V	23 = Luna-Silber	M = 23°
	...	35 = 3500 K	10 = DALI	30 = schwarz m.	F = 37°
		40 = 4000 K		32 = weiß matt	XF = 55°